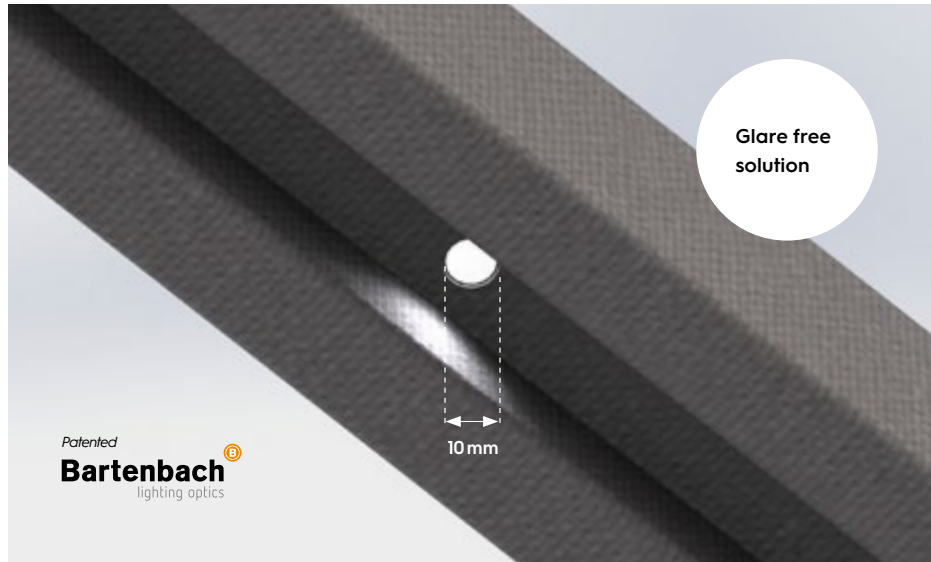




Integrated
LED module for
Textile Heartfelt®
Panels

Felta

ILLUXTRON®
LIGHTING



LIGHTING SPECIFICATIONS

Lumen output: 550/600/650Lm
Cct: 2700/3000/4000K
Hole size: Ø 10 mm
CRI: 82
Wattage: 8.0W
UGR: <10 (see datasheet)
Lumen watts: 81 Lm/W
Input current: max. 700 mA
Beam angle: 60°
Safety class: III
Safety norms: EN60598 / EN62031 / EN62471
Emc norms: EN55015
Operating temperature: -20°C / +45°C
Lifetime L90B10 reported: >60.000 hrs
Environment: Indoor
Colour consistency (SDCM): MacAdam step 3

HEARTFELT® LINEAR SPECIFICATIONS

- Modular linear felt system
- Panel dimensions
Boxshaped: 40 x 55 mm
- Available in 5 shades of grey and 5 earth tones
- Panel length max. 6000 mm

HEARTFELT® GROOVE SPECIFICATIONS

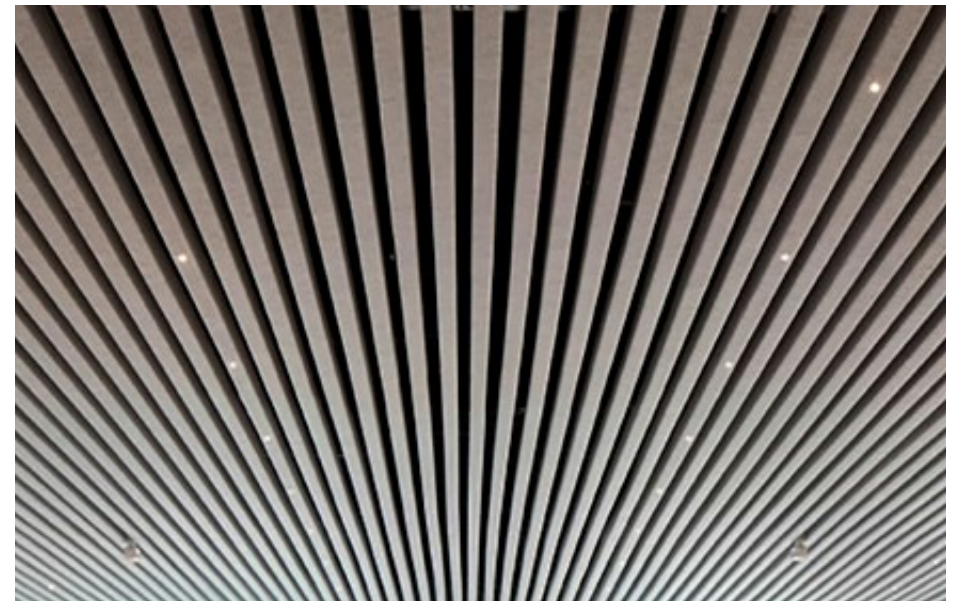
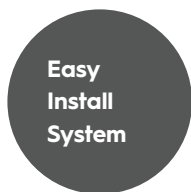
- Modular linear felt system
- Panel dimensions
Boxshaped: 60 x 50 mm
- Available in 5 shades of grey
- Panel length max. 6000 mm

HEARTFELT® BY HUNTER DOUGLAS

These unique felt ceilings have excellent acoustic properties and offer an exceptional appearance where comfort and aesthetics are paramount. Sustainability is a crucial concept with this ceiling: Heartfelt® is 100% recyclable, and/or the materials can be easily reused. Hunter Douglas uses felt material specifically to create beautiful ceilings that meet the highest acoustic and visual requirements.

FELTA BY ILLUXTRON

Illuxtron faced the challenge of creating a lighting module that would produce the desired light image while minimizing disruption to the clean lines of the ceiling.



FELTA

This version is intended for integration into the TEXTILE Heartfelt® Linear. Only the tube of the patented optics sticks through the hole that can be made in the panel, the rest of the lighting is completely invisible. The top bracket not only provides extra cooling, but also ensures that the optics remain properly positioned in the hole.

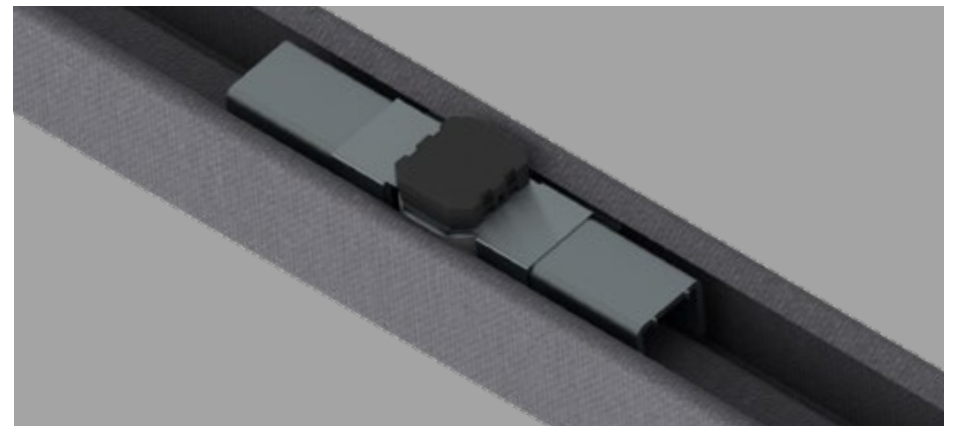
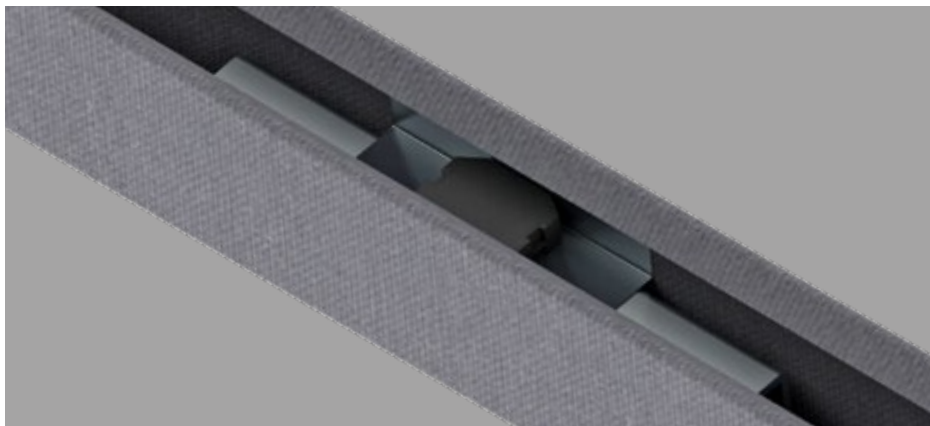
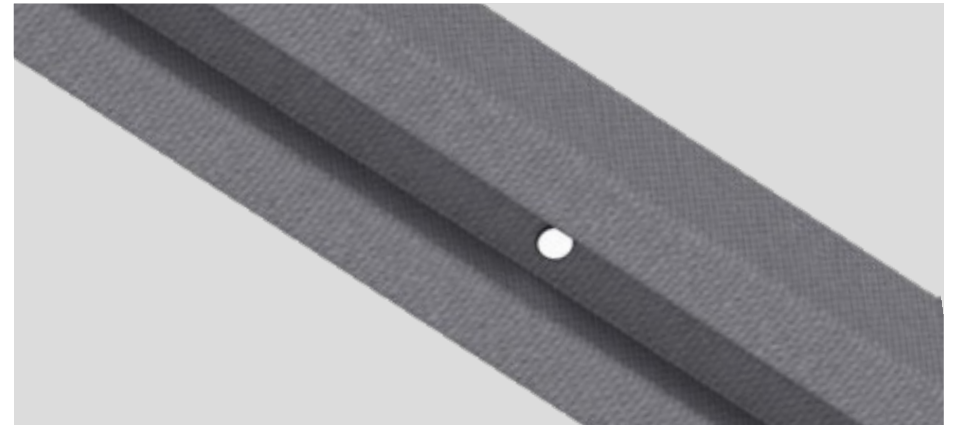
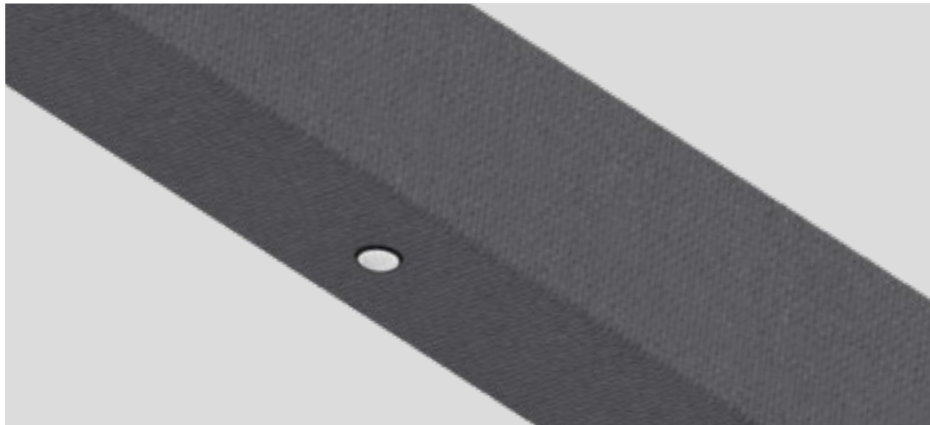


GROOVY

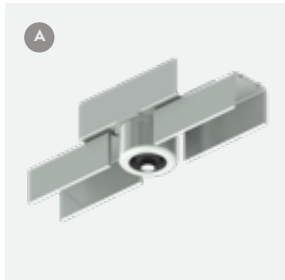
This version is intended for integration into the TEXTILE Heartfelt® Groove. Because the optics are recessed into the groove of the panel, the annoying radiation light is almost completely hidden from view. The top bracket of the Groovy is lower and adjusted to the height of the Groove panel.



GROOVY



HV DISTRIBUTOR SYSTEM



Felta spot

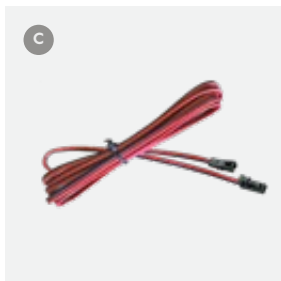


Groovy spot

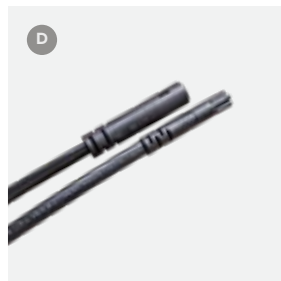


LV cable set (4 spots)

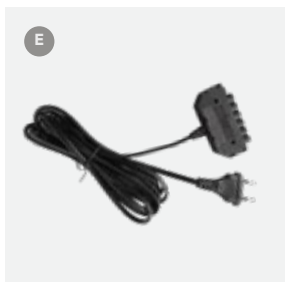
PSU 36W No dim
PSU 40W Triac
PSU 38W Casambi



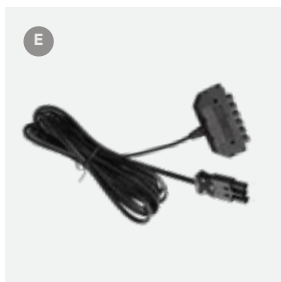
LV Extension cable 10m (remote PSU)



HV Extension cable 2m (between driver and 6-way distributor)

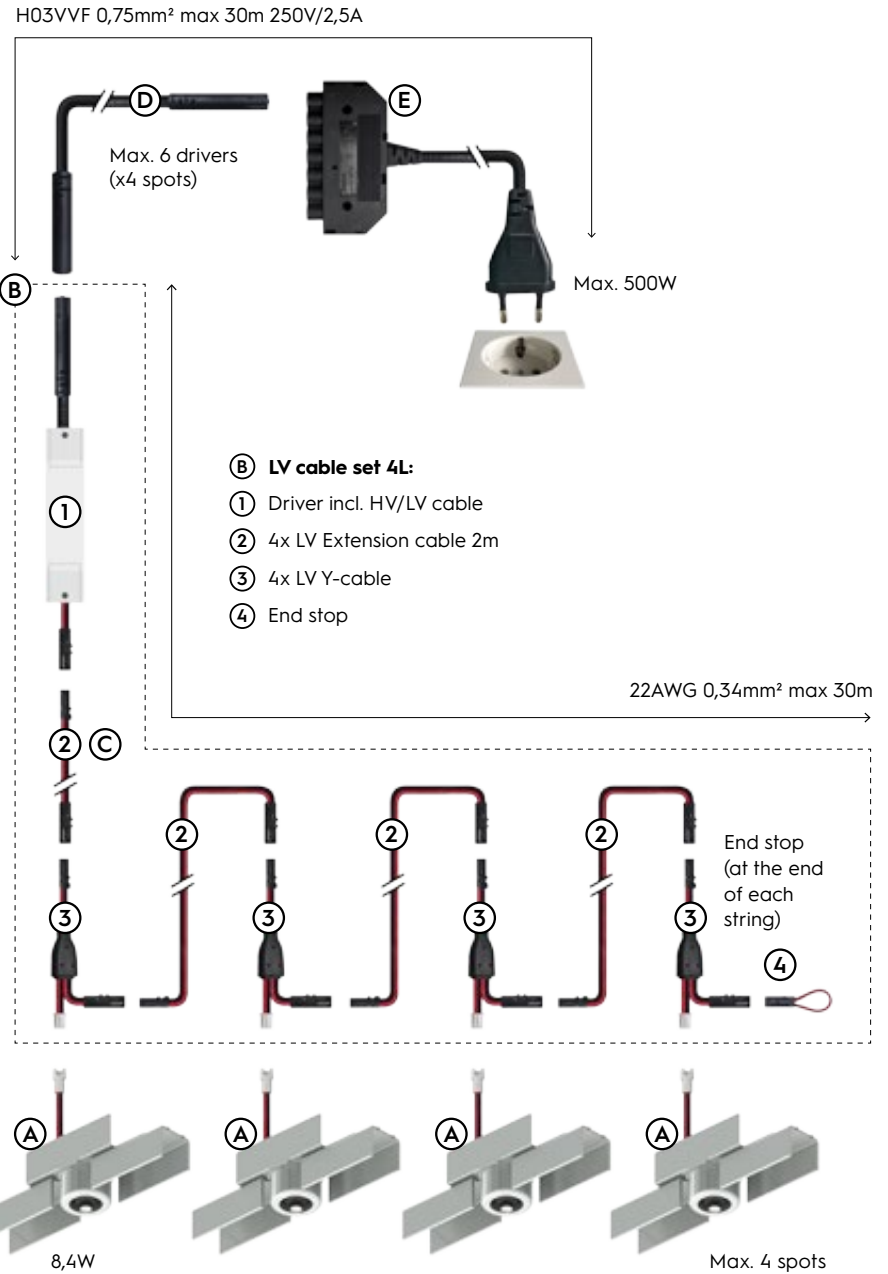


HV Distributor 6x + Europlug



HV Distributor 6x + GST18 3P

GROOVY



HV DISTRIBUTOR SYSTEM - PRODUCTS

	Description	Specification	Item code	Over carton
A	Felta + LV Plug	2700K CRI82 550LM 60° 700mA 12Vf	FL2803AL27E2	8 pcs
		3000K CRI82 600LM 60° 700mA 12Vf	FL2803AL30E2	8 pcs
		4000K CRI82 650LM 60° 700mA 12Vf	FL2803AL40E2	8 pcs
A	Groovy + LV Plug	2700K CRI82 550LM 60° 700mA 12Vf	GR2803AL27E2	8 pcs
		3000K CRI82 600LM 60° 700mA 12Vf	GR2803AL30E2	8 pcs
		4000K CRI82 650LM 60° 700mA 12Vf	GR2803AL40E2	8 pcs
B	PSU + LV cable set 4L + HV cable 0,15m	36W 700mA No dim nfc	05PH03MLMV00	10 pcs
		40W 700mA Triac nfc		10 pcs
		36W 700mA Casambi nfc	05PK03MLMV00	10 pcs
C	LV Extension cable	LV 10m m/f (0,34mm ²)	6E5203BL1202	16 pcs
D	HV Extension cable	HV Ø7,6mm 2m m/f (0,75mm ²)	6F5203BL1202	30 pcs
E	HV Distributor 6x	HV Ø7,6mm 6x + cable 1m 2,5A / Europlug	665203BL2502	15 pcs
		HV Ø7,6mm 6x + cable 1m 2,5A / GST18 3P	665203BL1502	15 pcs
H	Hole puncher	Felta Groove 10mm incl. alignment tool	001J03RE0000	1 pc



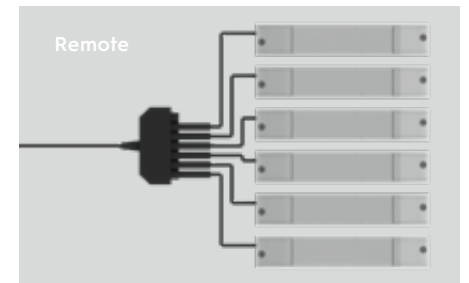
Hole puncher Felta/Groovy

By clamping a block of wood in a vise, it is possible to make a hole in the slat yourself using a hole punch and an alignment tool.



INSTALLATION PSU

It's recommend to place the drivers decentrally, but if this is not possible, it is better to place a mains filter on the power group because it might be difficult to replace a defective driver. For instance: Littlefuse LSP05G240SX333 or Littlefuse LSP05G277SX333.



The drivers are provided with 2 pcs of double-sided tape for attachment to the cross rail. Due to the difficult accesssibility of the power supply, we recommend using a mains filter to increase the lifespan of the power supply

It is recommended to install the power supplies in an easily accessible place. By using the LV extension cable, the distance to the last spot can be increased to a maximum of 30 meters.

PLUG & PLAY CABLES



Felta spot

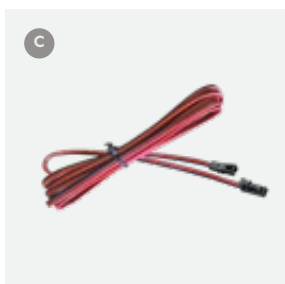


Groovy spot

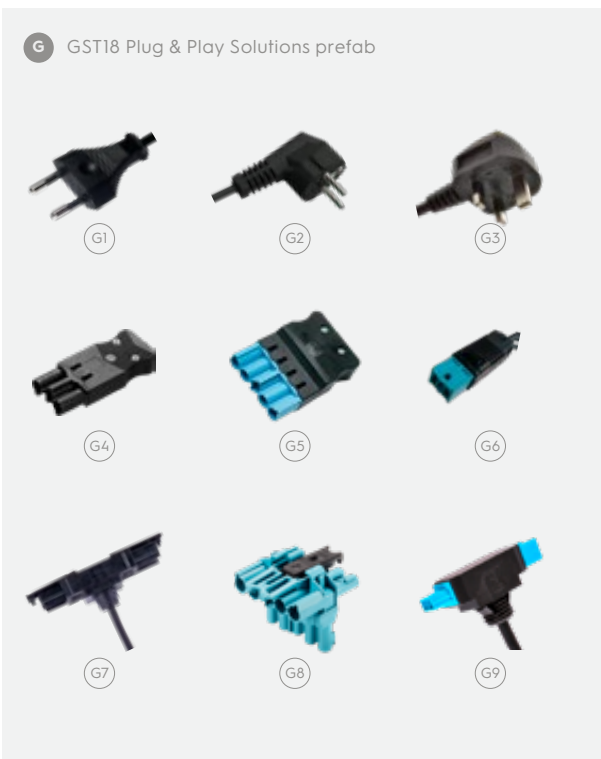


LV cable set (4 spots)

- PSU 36W No dim
- PSU 40W Triac
- PSU 38W Casambi
- PSU 36W Dali



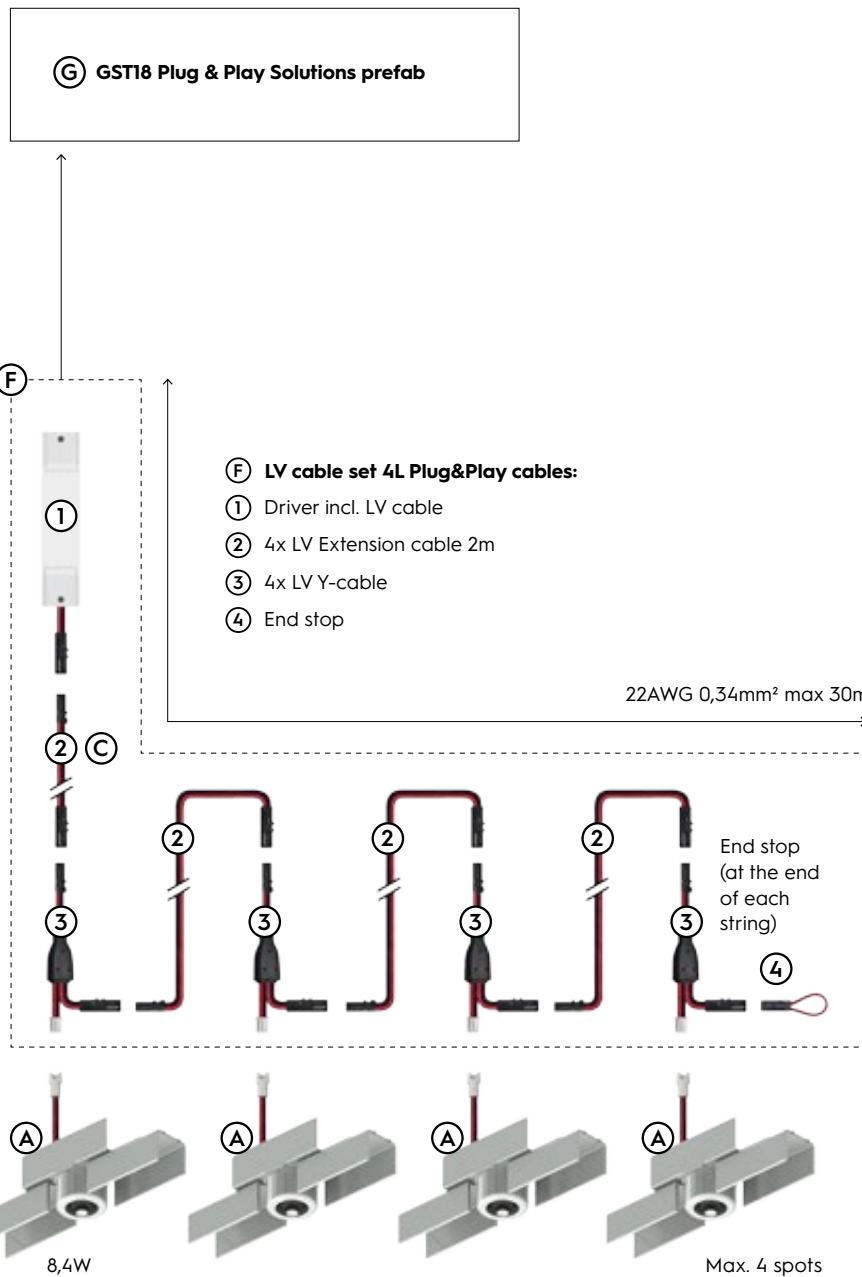
LV Extension cable 10m (remote PSU)



GST18 Plug & Play Solutions prefab

- G1
- G2
- G3
- G4
- G5
- G6
- G7
- G8
- G9

GROOVY

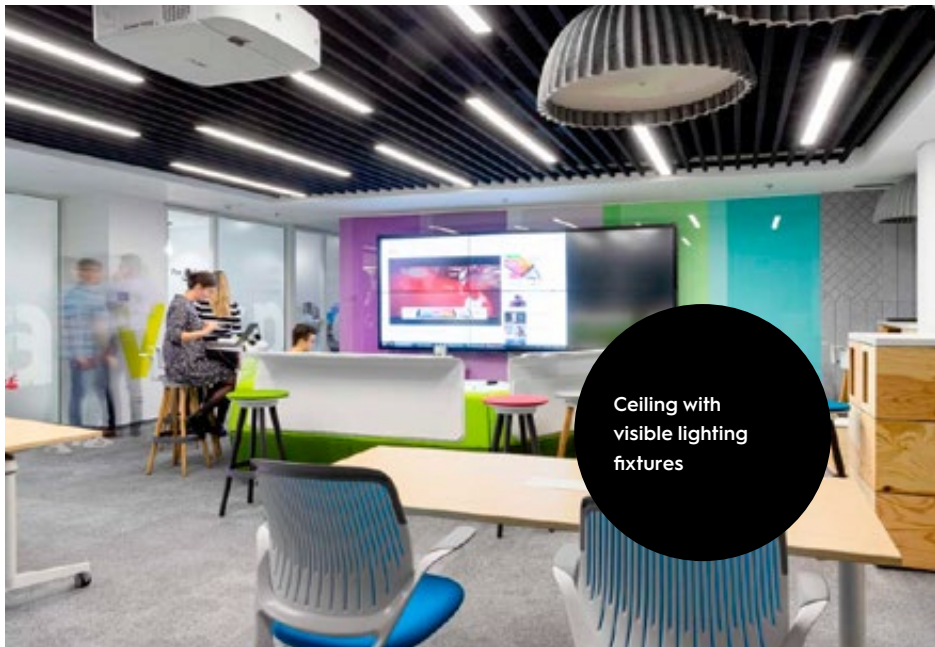


PLUG & PLAY CABLES - PRODUCTS

	Description	Specification	Item code	Over carton
A	Felta + LV Plug	2700K CRI82 550LM 60° 700mA 12Vf	FL2803AL27E2	8 pcs
		3000K CRI82 600LM 60° 700mA 12Vf	FL2803AL30E2	8 pcs
		4000K CRI82 650LM 60° 700mA 12Vf	FL2803AL40E2	8 pcs
A	Groovy + LV Plug	2700K CRI82 550LM 60° 700mA 12Vf	GR2803AL27E2	8 pcs
		3000K CRI82 600LM 60° 700mA 12Vf	GR2803AL30E2	8 pcs
		4000K CRI82 650LM 60° 700mA 12Vf	GR2803AL40E2	8 pcs
F	PSU + LV cable set 4L	36W 700mA No dim nfc		10 pcs
		40W 700mA Triac nfc		10 pcs
		38W 700mA Casambi nfc		10 pcs
		36W 700mA Dali nfc		8 pcs
C	LV Extension cable	LV 10m m/f (0,34mm ²)	6E5203BL1202	16 pcs
H	Hole puncher	Felta Groove 10mm incl. alignment tool	001J03RE0000	1 pc

GST18 PLUG & PLAY SOLUTIONS PREFAB

	Description	Class	Length	Item code	Over carton
G1	Euro plug incl. cable	II	2.0 m	015203BL1200	
G2	Schuko plug incl. cable	I	1.5 m	1C5203BLA000	
G3	UK plug incl. cable	II	2.0 m	0A5203BL1200	
G4	GST18-3 male incl. cable 2x0.75mm ²	II	0.3 m	455203BL0000	
G4	GST18-3 male incl. cable 2x0.75mm ²	II	3.0 m	455203BL1500	
G4	GST18-3 male incl. cable 3x0.75mm ²	I	0.3 m	4A5203BL0000	
G4	GST18-3 male incl. cable 3x0.75mm ²	I	3.0 m	4A5203BL1500	
G5	Dali GST18-5 male incl. cable 5x0.75mm ²	I	0.3 m	6A5203BL0000	
G5	Dali GST18-5 male incl. cable 5x0.75mm ²	I	3.0 m	6A5203BL1500	
G6	Dali BST14i male incl. cable	III	0.5 m	095203BL0000	
G6	Dali BST14i male incl. cable	III	3.0 m	095203BL1500	
G7	GST18-3 T-splitter male incl. cable	II	0.2 m	459203BL0000	
G7	GST18-3 T-splitter male incl. cable	I	0.2 m	4A9203BL0000	
G8	GST18-5 T-splitter male	I / II	x	659203BU0000	
G9	1-10V/Dali BST14i T-splitter male incl. cable	III	0,2 m	099203BL0000	



Ceiling with visible lighting fixtures



The tranquility of the integrated Felta fixture

About us



ILLUXTRON

With over 50 years of knowledge and experience in the lighting industry, we have become a leading supplier of high-quality LED lighting products. We know our products inside out and strive for continuous improvements. But we don't stop there - if our collection doesn't meet your needs, we can provide custom-made lighting solutions, from minor modifications to entirely new products. It is, therefore, no coincidence that an ever-increasing number of customers apply Illuxtron lighting products in projects.



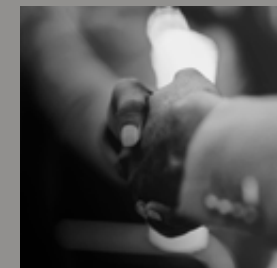
100% DUTCH

Our R&D department in the Netherlands develops our LED lighting from A to Z. We know our products inside out and challenge ourselves to improve them.



7-YEAR GUARANTEE

Our guarantee is based on the luminaires burning continuously at a maximum ambient temperature of 45°.



CUSTOMER SUPPORT

Our sales department is always at your service for any questions or for support. sales@illuxtron.com
+31 (0)85 773 63 60

Check out our website for
more information and inspiration.
Scan the QR code or go to
illuxtron.com!



Illuxtron International BV
Mercuriusweg 19
4382 NC Vlissingen
The Netherlands

+31 (0)85 773 63 60
info@illuxtron.com
www.illuxtron.com

ILLUXTRON®
LIGHTING