

FEATURES

- Made in the Netherlands from raw material to endproduct
- Low glare solution (<UGR 19)



Altra 68

Fixed

SPECIFICATIONS

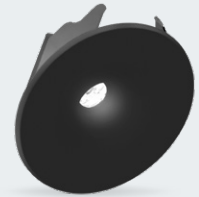
Beam angle	40°/80°
Color	White 9016 / Black 9005
Fixture material	Frontring : PA / Lens : PMMA
CCT	2700K / 3000K / 4000K
CRI	93
IK rate	IK02
IP rate	IP20/IP44
Operating temperature	20-45°C
Safety marks	EN60598
Colour consistency	MacAdam step 3
Warranty	5 years
Safety class	III
Energy class	These products contains a light source of energy efficiency class F (2700K/3000K) / E (4000K)

This luminaire contains built-in LED lamps. There are no exchangeable parts inside the luminaire. EU 874/2012

¹ In applications with a flat roof (f.i. car showrooms) the temperatures may exceed 45°C. Please ask our sales office for a special driver.

COLOURS

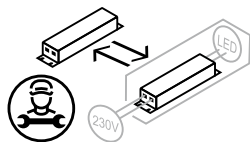
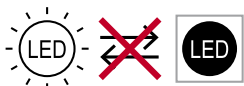
Available colours:



Matt white RAL 9016 (XX=WH)
 Matt black RAL 9005 (XX=BL)

SPRINGS

Standard with Wire spring as below (gyproc/metal). Also available as above with Concrete spring (concrete/gyproc).



MADE IN HOLLAND

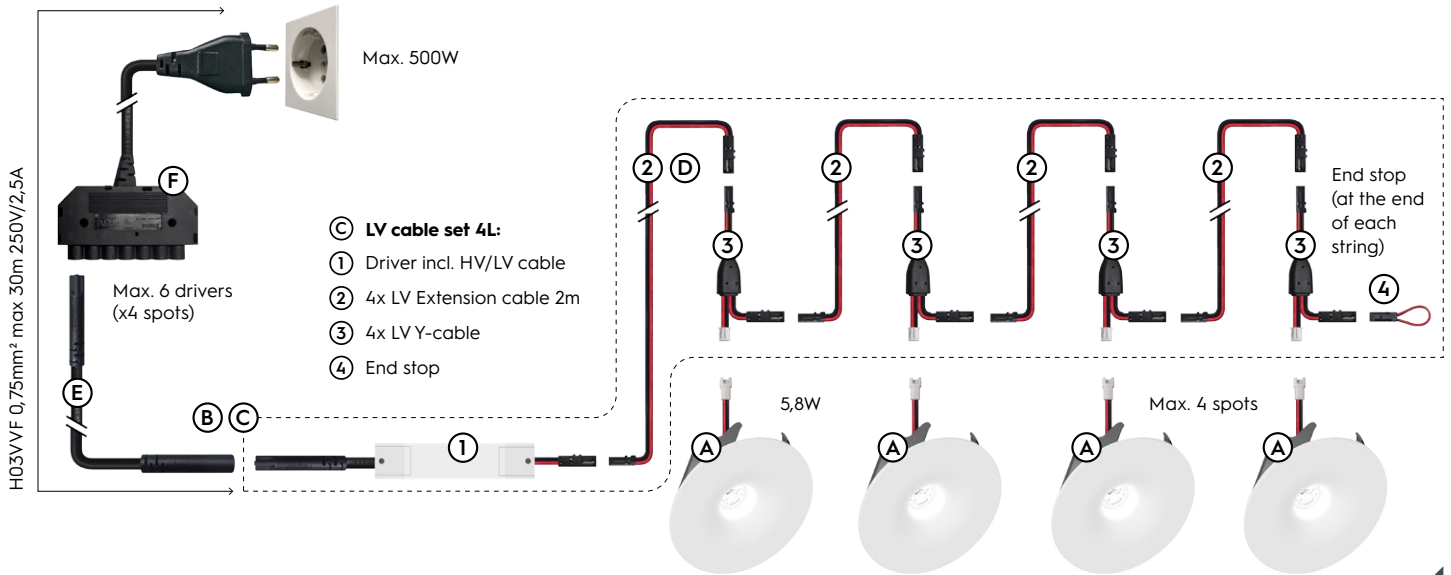
5-YEAR GUARANTEE

ECO

IP20
IP44

ALTRA 68 LV ^A

500 mA



ITEM SPECIFICATIONS

Description	Item code	Input	Vf	W	Lm	Lm/W	CRI (typ.)	UGR	Pf	Ripple	Inrush current	B-16A Fuse
Altra 68 LV 500mA 600 Lm 2700K Dim 40°		500mA	11.9	5,8	600	103	93	15.2	x	x	x	x
Altra 68 LV 500mA 625 Lm 3000K Dim 40°		500mA	11.9	5,8	625	108	93	15.2	x	x	x	x
Altra 68 LV 500mA 650 Lm 4000K Dim 40°		500mA	11.9	5,8	650	112	93	15.2	x	x	x	x
Altra 68 LV 500mA 600 Lm 2700K Dim 80°		500mA	11.9	5,8	600	103	93	21.6	x	x	x	x
Altra 68 LV 500mA 625 Lm 3000K Dim 80°		500mA	11.9	5,8	625	108	93	21.6	x	x	x	x
Altra 68 LV 500mA 650 Lm 4000K Dim 80°		500mA	11.9	5,8	650	112	93	21.6	x	x	x	x

Description	Safety class	Energy class	Weight	Dimensions carton	Quantity per carton	Expected lifespan B10 (25°C)		
						L70B10	L80B10	L90B10
Altra 68 LV 500mA 600 Lm 2700K Dim	III	F	122 gr	105x105x61 mm	42 pcs	166.000 hrs	105.000 hrs	50.000 hrs
Altra 68 LV 500mA 625 Lm 3000K Dim	III	F	122 gr	105x105x61 mm	42 pcs	166.000 hrs	105.000 hrs	50.000 hrs
Altra 68 LV 500mA 650 Lm 4000K Dim	III	E	122 gr	105x105x61 mm	42 pcs	166.000 hrs	105.000 hrs	50.000 hrs

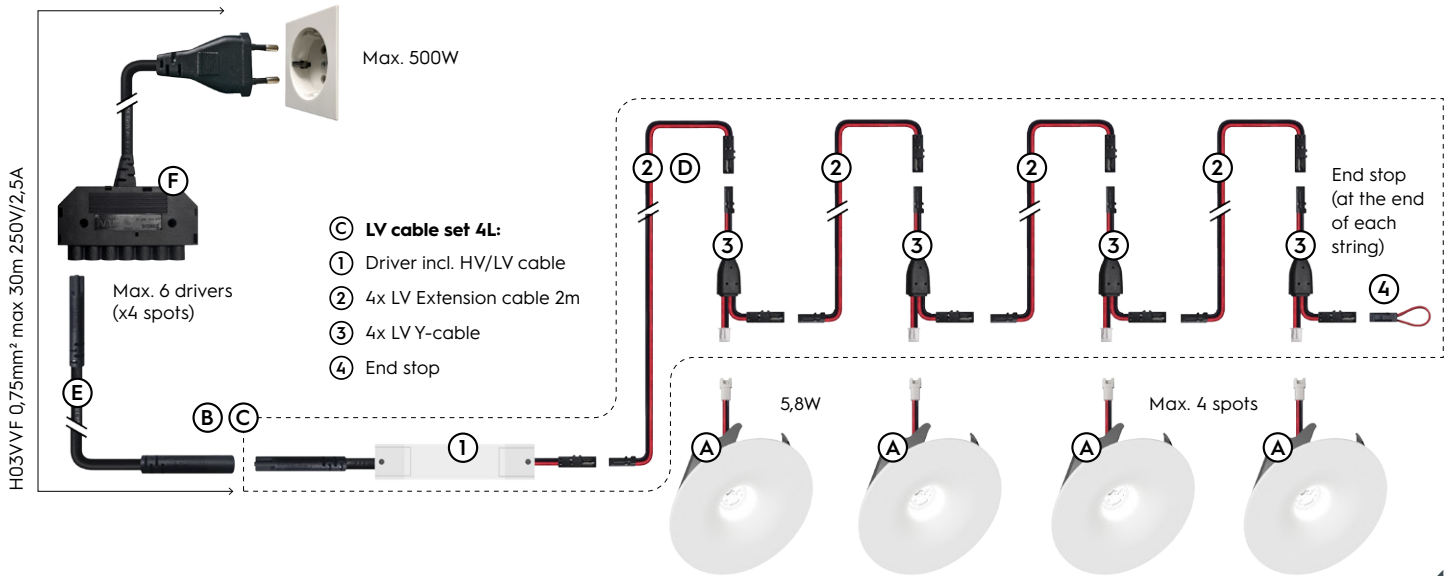
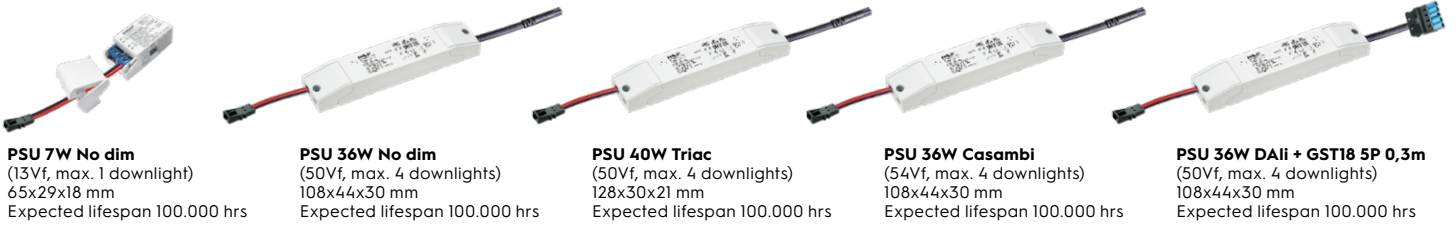
All values are measured at 230V (+/- 7%)

CHOOSE YOUR LV LUMEN OUTPUT

	mA	W	Lumen Output			Lumen / Watt			Driver types				
			2700K	3000K	4000K	2700K	3000K	4000K	KGP No dim 7W	KGP No dim	KPG Triac	TCI Casambi	KGP Dali
Special request	350	4,1	430	450	470	105	110	115	CC7W350-700CG	CC36W150-900	CC40W150-1000mA	127648	CC36W150-900
Standard	500	5,8	600	625	650	103	108	12	CC7W350-700CG	CC36W150-900	CC40W150-1000mA	127648	CC36W150-900

DIMENSIONS

LV CABLE SET (INCL. PSU) **C**



ITEM SPECIFICATIONS (PSU)

Description	Item code	Input	Watt	Current	Efficiency	Pf	Ripple	Weight	Inrush	B-16A current Fuse
B PSU 7W No dim		220-240V	7W (50Vf)	500mA	76%	0.91	<3%	100 gr	5mA 60µS	59 pcs
C PSU 36W No dim LV cable set	05PH03MLMV00	220-240V	36W (50Vf)	500mA	88%	0.95	<3%	100 gr	≤8,5A 16µS	59 pcs
C PSU 40W Triac LV cable set		220-240V	40W (50Vf)	500mA	86%	0.95	<3%	100 gr	10A 16µS	50 pcs
C PSU 36W Casambi LV cable set	05PK03MLMV00	220-240V	36W (54Vf)	500mA	90%	0.95	<3%	139 gr	5A 50µS	50 pcs
C PSU 36W Dali LV cable set + GST18 5P 0,3m	05PJ03MLMX00	220-240V	36W (50Vf)	500mA	88%	0.95	<3%	97 gr	≤8,5A 16µS	59 pcs

All values are measured at 230V (+/- 7%)

PLUG & PLAY ACCESSORIES

D (Extra) LV Extension cable 10m (remote PSU)



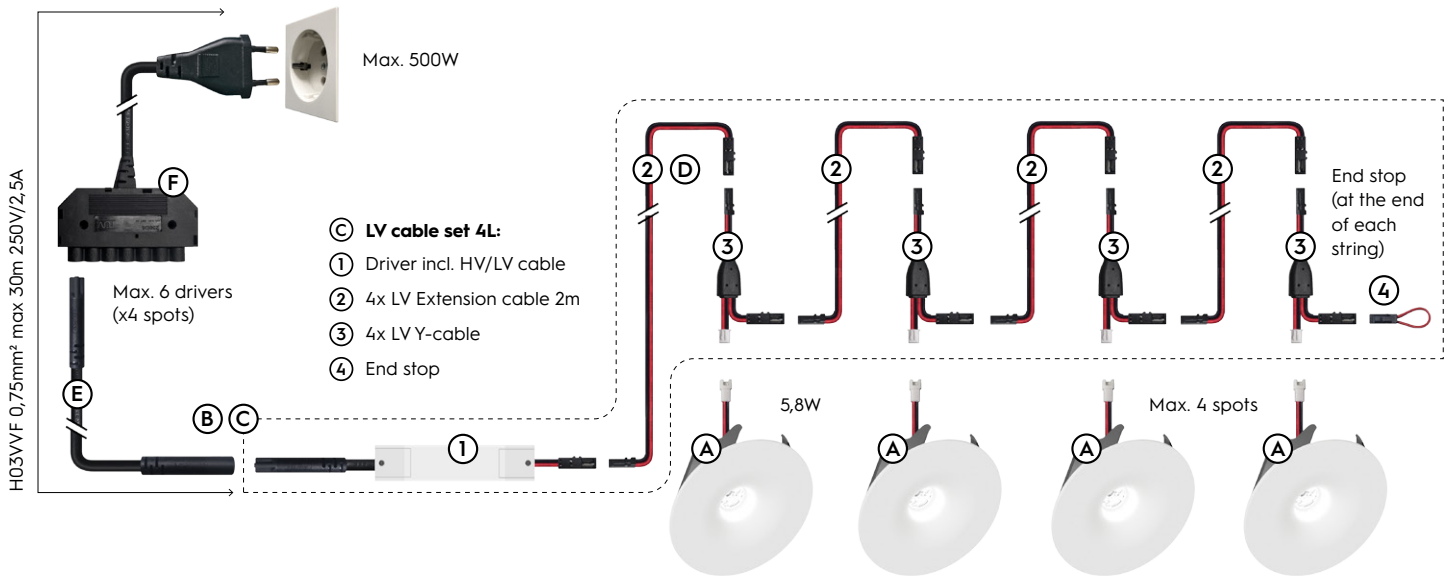
E HV Extension cable



F HV Distributor 6x + Europlug



F HV Distributor 6x + GST18 3P

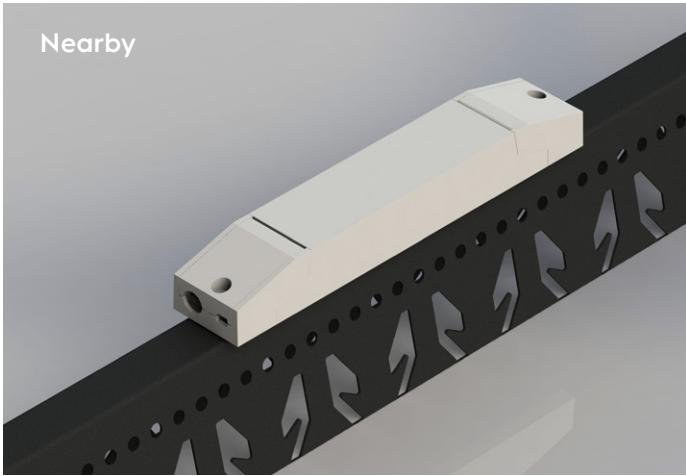


ITEM SPECIFICATIONS (ACCESSORIES)

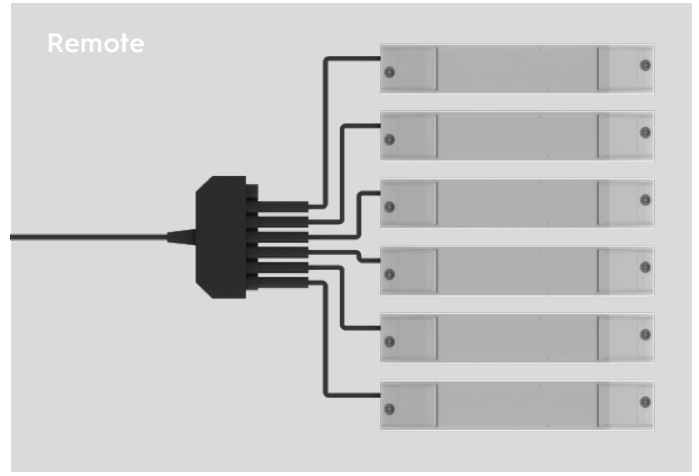
Description	Specification	Item code	Weight	Dimensions single carton	Quantity per carton
D LV Extension cable	LV 10m m/f (0,34mm ²)	6E5203BL1202	120 p/st	302x220x100 mm	16 pcs
E HV Extension cable	HV Ø7,6mm 2m m/f (0,75mm ²)	6F5203BL1202	78 p/st	302x220x100 mm	30 pcs
F HV Distributor 6x + Europlug	HV Ø7,6mm 6x + cable 1m 2,5A / GST18 3P	665203BL2502	148 p/st	302x220x100 mm	15 pcs
F HV Distributor 6x + GST18 3P	HV Ø7,6mm 6x + cable 1m 2,5A / GST18 3P	665203BL1502	148 p/st	302x220x100 mm	15 pcs

All values are measured at 230V (+/- 7%)

INSTALLATION PSU



The drivers are provided with 2 pcs of double-sided tape for attachment to the cross rail. Due to the difficult accessibility of the power supply, we recommend using a mains filter to increase the lifespan of the power supply



It is recommended to install the power supplies in an easily accessible place. By using the LV extension cable, the distance to the last spot can be increased to a maximum of 30 meters.

RECOMMENDED DIMMERS FOR TRIAC 40W DRIVER

Manufacturer	Model
ABB	6519 U
ABB	6526 U
JUNG	1224 LED UDE
Berker	2861
JUNG	254 UDIE 1
JUNG	225 TDE
EGANT	U321V2
Schneider	SBD200LED
Schneider	SBD315RC
Merten	SBD200LED
Berker	2874
Eitako	EUD61NPL-230V
Eitako	EUD12NPN-UC
Eitako	EUD12D-UC
Eitako	EUD61NP-230V
Eitako	DTD55-230V-wg
Eitako	DTD55L-230V-wg
GIRA	Universal-LED-Dimmer Mini2440 00
EHMANN	LED-Dimmer T46.08
JUNG	DrehDimmer Universal LED1731DD

Leading Edge Dimmer list only on request -/ or confirmed by KGP Electronics